

Pressure Transmitter

ATM/F - Hygienic Pressure Transmitter



CUSTOMER BENEFITS

- Welded and compact design for washdowns without residuals
- Surface roughness of flush process connection $Ra \leq 0.4$ for highest hygienic standards
- Demountable electrical connector option allow adjustment of zero and span setting in the field
- Fast customization thanks to modular product design
- Short response times suitable for dynamic pressure measurements

Technical Specifications

PRESSURE MEASURING RANGE (BAR)

	0.1 ... 0.5	> 0.5 ... 2	> 2 ... 25
Overpressure	3 bar	3 x FS (≥ 3 bar)	3 x FS
Burst pressure, (1)	> 200 bar	> 200 bar	> 200 bar
Accuracy, (2), (\pm % FS)	$\leq 0.5 / \leq 0.25$	$\leq 0.5 / \leq 0.25 / \leq 0.1$	$\leq 0.5 / \leq 0.25 / \leq 0.1$
Thermal shift (\pm % FS/ $^{\circ}$ C)			
Zero point 0 ... 70 $^{\circ}$ C	≤ 0.06	≤ 0.03	≤ 0.015
Zero point -25 ... 85 $^{\circ}$ C	≤ 0.08	≤ 0.04	≤ 0.02
Span 0 ... 70 $^{\circ}$ C	≤ 0.015	≤ 0.015	≤ 0.015
Span -25 ... 85 $^{\circ}$ C	≤ 0.02	≤ 0.02	≤ 0.02
Long term stability, (3)	< 0.5% FS / < 4 mbar	< 0.2% FS / < 4 mbar	< 0.1% FS / < 0.2% FS

(1) Transducer

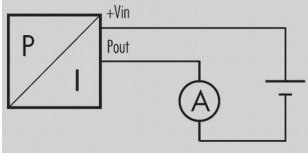
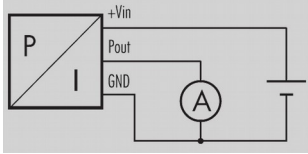
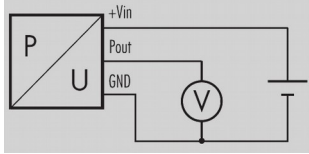
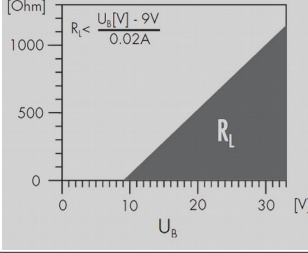
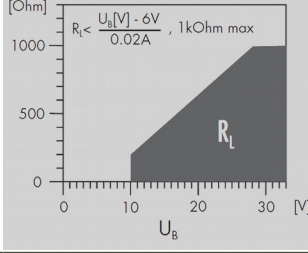
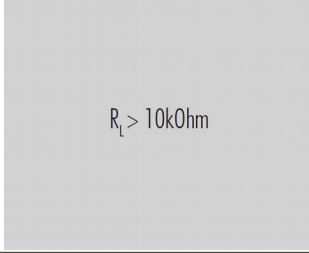
(2) Zero based accuracy according to DIN-16086, incl. hysteresis and repeatability at ambient temperature

(3) 1 year (typ. / max.)

TEMPERATURE RANGE

Operating temperature	-25 ... 85 $^{\circ}$ C
Process temperatur	-25 ... 100 $^{\circ}$ C
Storage temperatur	-25 ... 85 $^{\circ}$ C

ELECTRICAL SPECIFICATIONS

	4 ... 20 mA	0 ... 20 mA	0 ... 5 V / 0 ... 10 V
Power supply	10 ... 33 VDC	9 ... 33 VDC	15 ... 30 VDC
Supply influence	< 0.1% FS	< 0.1% FS	< 0.1% FS
Current consumption	3 mA		
Circuit diagram			
Load resistance			
Load influence	< 0.1% FS	< 0.1% FS	< 0.1% FS

QUALIFICATIONS

	Description	Level	Typical interferences
EN 61000-4-2	Electrostatic discharge	4 kV contact / 8 kV air	
EN 61000-4-3	Irradiated RF	10V/m (0.08 ... 1 GHz)	Radio sets, wireless phones
EN 61000-4-4	Transients (burst)	2 kV	Motors, valves
EN 61000-4-5, (1)	Surge	10 kA (8 / 20 μ s), (1)	Overvoltage
EN 61000-4-6	Conducted RF	10 V (0.15...80 MHz)	Frequency converters

(1) Only with optional overvoltage protection

PHYSICAL SPECIFICATIONS

Materials	
Transducer	Stainless steel (316L / 1.4435)
Housing	Stainless steel (316L / 1.4404)
Seals	Viton
Surface roughness of the flush (Ra)	0.4 - 0.8

Accessories

OVERVIEW

10.00.0091	Accessories overview
HART001	Cable Socket Connector DIN43650

Additional documents

OPERATING AND SAFETY INSTRUCTIONS

	Article number
10.88.0092	DMM029

Ordering information

	X	XXXX	XXXX	XX	XXX
Type					
ATM/F					25
Pressure type					
Gauge					1
Absolute pressure (vacuum)					2
Sealed gauge					3
Pressure measuring range					
100 mbar ... 25 bar				XX	
Process connection					
Milk flange DN 25 - DIN-11851 (Fig. 1), (1)					30
Milk flange DN 40 - DIN-11851 (Fig. 2), (1)					31
Milk flange DN 50 - DIN-11851 (1)					32
Clamp 1", DN 25 (Fig. 3)					40
Clamp 1 1/2", DN 25 (Fig. 3)					41
DIN flange DN 25					45
DIN flange DN 40					46
DIN flange DN 50					47
Customized					99
Electrical connection					
DIN-43650, with metal threaded part, demountable, IP 65 (Fig. 10), (2)					01
M16 (Binder 723), 5 pins, (2)					03
M16 (Binder 723), 5 pins, demountable, IP 67 (Fig. 12), (2)					43
MIL C26482, 10-6, IP 40 (Fig. 13), (2)					06
M12 (Lumberg RSF4), 4 pins (Fig. 15), (2)					07
Customized					99
Output signal					
4 ... 20 mA					05
0 ... 20 mA					00
0 ... 5 VDC					46
0 ... 10 VDC					47
4 ... 20 mA with overvoltage protection					08
0 ... 10 VDC with overvoltage protection					49
Customized					99
Accuracy					
$\leq \pm 0.5\%$ FS					0
$\leq \pm 0.25\%$ FS					1
$\leq \pm 0.1\%$ FS					2
Temperature range					
0 ... 70°C compensated process temperature: -25 ... 100°C			(allow		0
-25 ... 85°C compensated (allowed process temperature: -25 ... 100°C)					1
-25 ... 85°C compensated (allowed process temperature: -25 ... 150°C) with cooling fins					2
Customized					9

Option 1			
Special oil filling: Anderol Food food applications)	(f		G
Special oil filling: AS100 (suitable in media temp. -55 ... 150°C)			J
Special oil filling: PAO4 (silicone free)			Q
Option 2			
Electronics packed in gel: Gauge pressure			C
Electronics packed in gel: Absolute pressure			D
Option 3			
Seals: Viton (standard)			U

(1) Nut included

(2) Cable socket connector not included

Technical drawings

Pressure connection

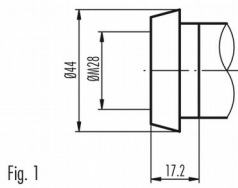


Fig. 1

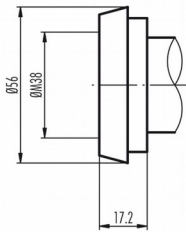


Fig. 2

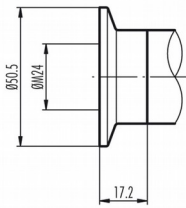
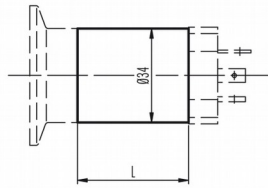


Fig. 3

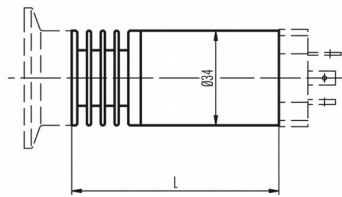
Dimensions

Version for media temperature up to 100°C



L = 90 mm for version with surge (lightning) protection
L = 40 mm for all other versions

Version for media temperature >100°C up to 150°C



L = 125 mm for version with surge (lightning) protection
L = 75 mm for all other versions

Electrical connections

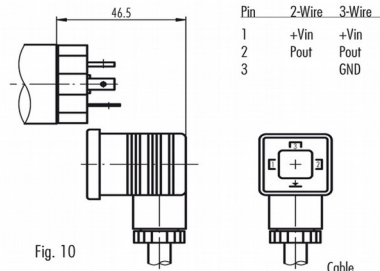


Fig. 10

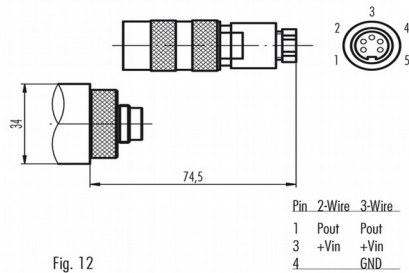


Fig. 12

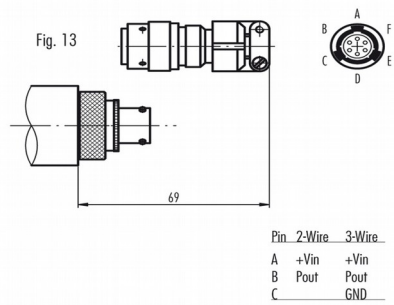


Fig. 13

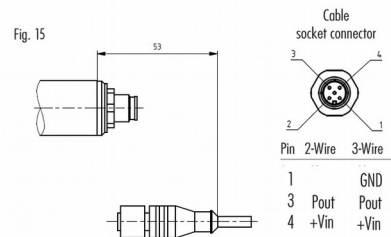


Fig. 15